



# Bruton Place is for those in the know who know London's most sought-after neighbourhood of Mayfair.

Bruton Place is for those in the know who know London's most sought-after neighbourhood of Mayfair.

Stroll down the mews of former town stables for an eclectic mix of independent retailers and restaurants. Each unit you encounter has its own distinct view, just like your business. And a few steps beyond takes you to Berkeley Square, the heart of vibrant Mayfair.

19 Bruton Place is a boutique office space across first and second floors covering 1,388 sq ft, with its own dedicated entrance.

Your part of Mayfair at your door.



19 BRUTON PLACE



# IMPECCABLE BOUTIQUE MAYFAIR SPACE TO MAKE YOUR OWN

## Summary specification

A rare and sought-after example of post-war industrial architecture moments from Berkeley Square.

- Self-contained office covering reception to 2nd floor.
- New WC's, Shower, windows and finishes throughout.
- Electric perimeter heaters and openable windows.
- Feature lighting and new entrance doors.
- Ideally located on vibrant Bruton Place just off Berkeley Square.
- The space benefits from high levels of natural daylight via new double-glazed, openable windows throughout.
- High efficiency LED lighting with smart lighting controls have been incorporated.
- Original parquet flooring.









# EXTRAORDINARY MEWS AND EVERYDAY MUSE



## A unique take on Mayfair

Bruton Place is a relaxed affair, exquisitely curated for the connoisseur in all of us. Part mews and part treasure trove, here are the best of the independents, be that for an early morning coffee, casual dining or contemporary retail.







Tucked away in a historic corner of bustling West London, Bruton Place is a discreet haven for workers, locals and passers-by.



Gastronomic, thirst-quenching and desire-making: Bruton Place gathers together a diverse range of distinctive experiences.







Energetic Mayfair is ever-changing, which is why so many leading businesses, institutions and thinkers make the neighbourhood their home.

Here in a single district of London's Great Estates and garden squares, you will find the world's most prestigious brands, thriving art galleries and renowned restaurants. But this is just half of the story of the place.

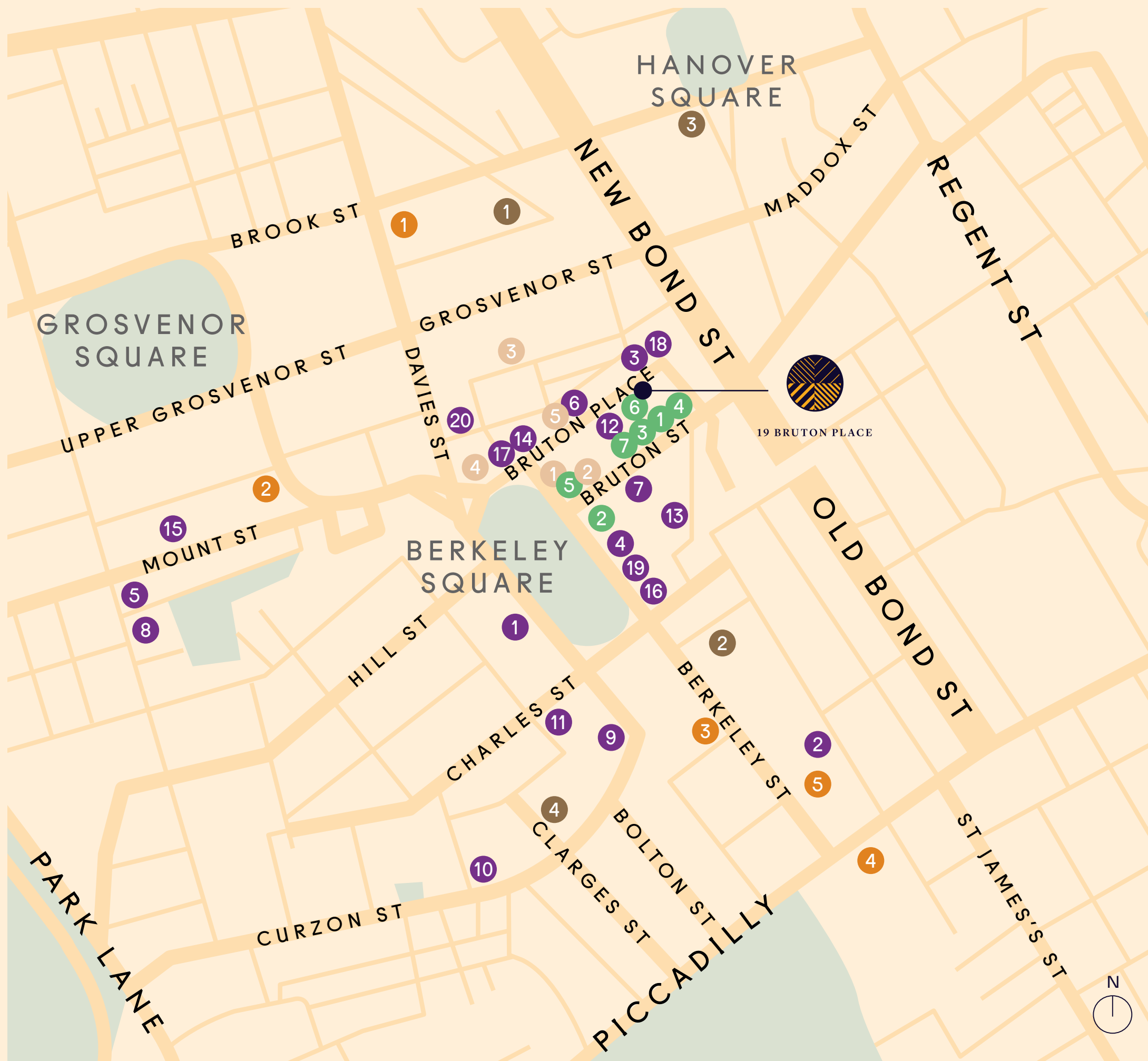
Mayfair is also remarkably unstuffy, offering a variety of choice and culture that attracts people of all backgrounds.



## ALL OF MAYFAIR AT YOUR DOOR







## Restaurant, bars & clubs

- 1 Annabel's
- 2 The Arts Club
- 3 Bellamy's
- 4 Benares Restaurant
- 5 George
- 6 The Guinea Grill
- 7 Hakkasan Mayfair
- 8 Harry's Bar
- 9 The Lansdowne Club
- 10 Little House Mayfair
- 11 Mark's Club
- 12 The Gentlemen Baristas
- 13 Mr Fogg's Residence
- 14 Lali Lifestyle
- 15 Scott's
- 16 Sexy Fish
- 17 OSI Wine and Gorgonzola Bar
- 18 Umu
- 19 Amazonica London
- 20 The Alfred Dunhill Club, Mayfair

## Retail

- 1 Brioni UK Ltd
- 2 Jack Barclay Bentley
- 2 H.R. Owen Ferrari
- 3 KENZO
- 4 Holland & Holland
- 5 Maison Margiela London
- 6 Rupert Sanderson Shoes
- 7 Temperley London

## Hotels

- 1 Claridge's
- 2 The Connaught Hotel
- 3 The May Fair Hotel
- 4 The Ritz London
- 5 1 Hotel London

## Art galleries

- 1 Delahunty Fine Art
- 2 E & R Cyzer
- 3 Gagosian
- 4 Phillips
- 5 Sladmore Contemporary

## Wellbeing / Wellness

- 1 Bath & Racquets Club
- 2 Matt Roberts Personal Training
- 3 Ten Health & Fitness Mayfair
- 4 Third Space Mayfair





## Head out in any direction for connections

Mayfair is highly prized as one of London's most central and connected locations. You can walk to the office from any point in the West End or, from Bruton Place itself, reach Green Park and Bond Street tube stations on foot in less than 10 minutes.

On top of numerous Underground lines, you have seamless links to London's railway stations. Then, there is Crossrail, arriving at Bond Street in 2021. The new Elizabeth line will speed passengers to Liverpool Street, Canary Wharf and London Heathrow in record times.

### Tube stations

- 5 minutes walk
  - Green Park
  - Central, Victoria & Bakerloo lines
- 10 minutes walk
  - Oxford Circus
  - Central, Victoria & Bakerloo lines
- 12 minutes walk
  - Piccadilly Circus
  - Piccadilly & Bakerloo lines

Transport times provided by TFL based on quickest journey time from either Green Park or Bond Street.

### Travel times

- 3 mins — Victoria
- 6 mins — London Bridge
- 7 mins — King's Cross & St.Pancras International
- 8 mins — Bond Street
- 12 mins — Liverpool Street
- 13 mins — Canary Wharf
- 34 mins — Heathrow

- Bakerloo line
- Central line
- Elizabeth line
- Jubilee line
- Piccadilly line
- Overground
- Victoria line



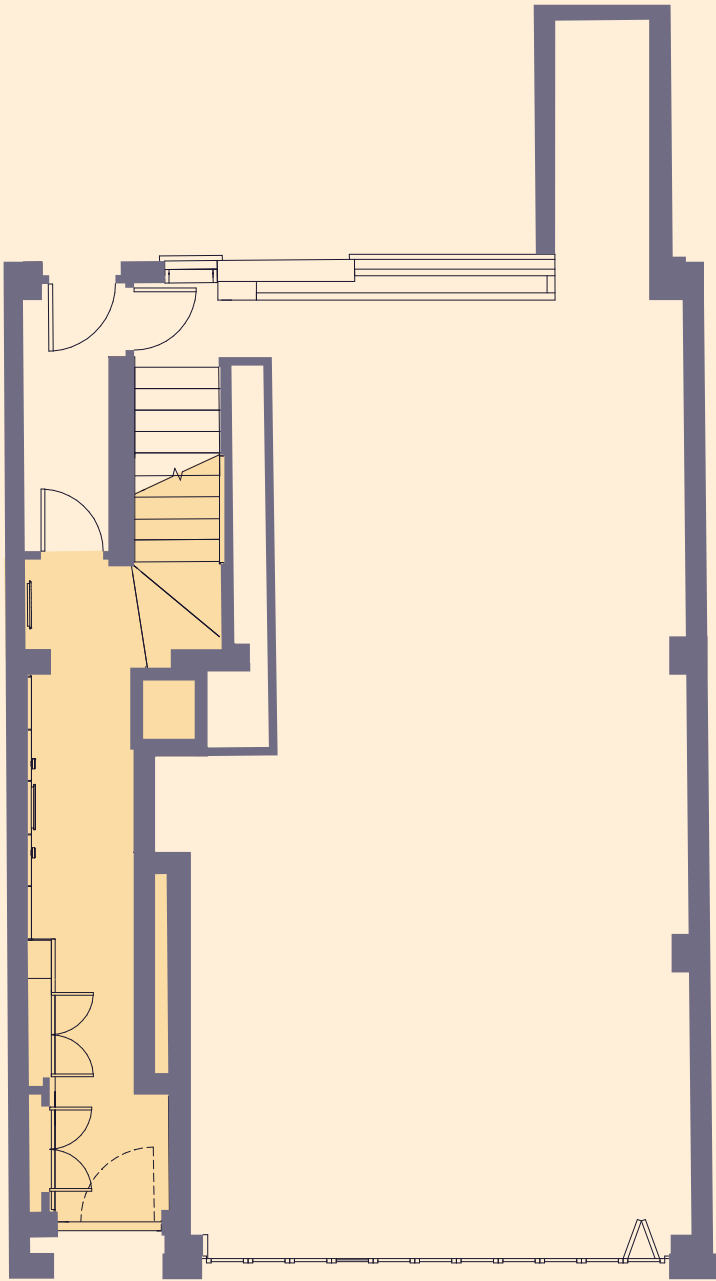
Schedule of areas

Level	NIA sq ft / sq m
1	721 sq ft / 67 sq m
2	667 sq ft / 62 sq m
Total	1,388 sq ft / 129 sq m





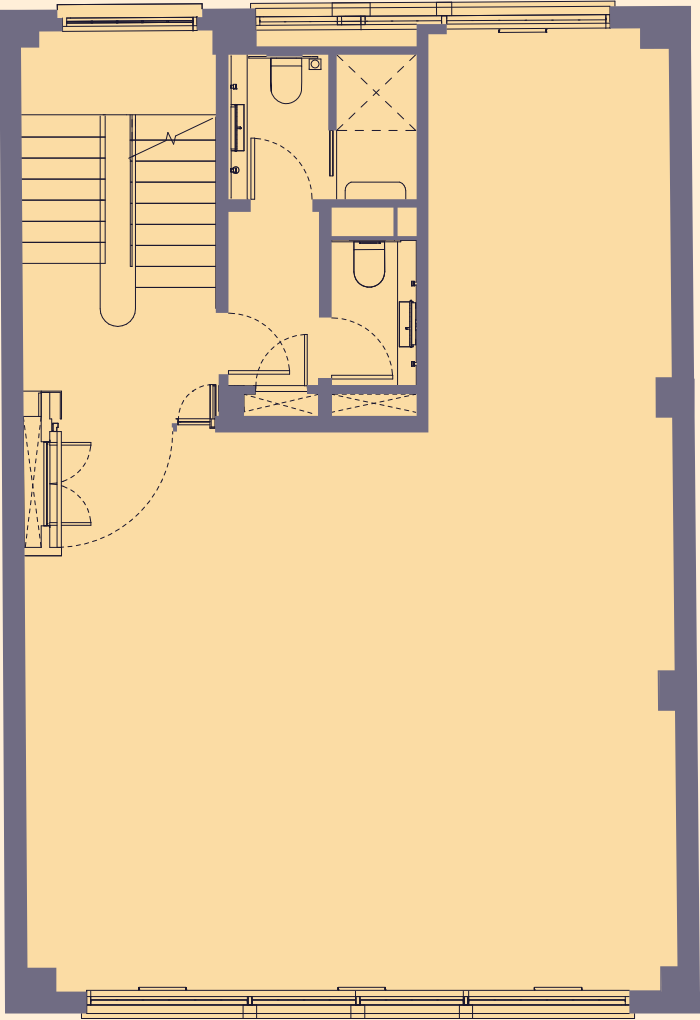
Ground floor



NOT TO SCALE

Level 1

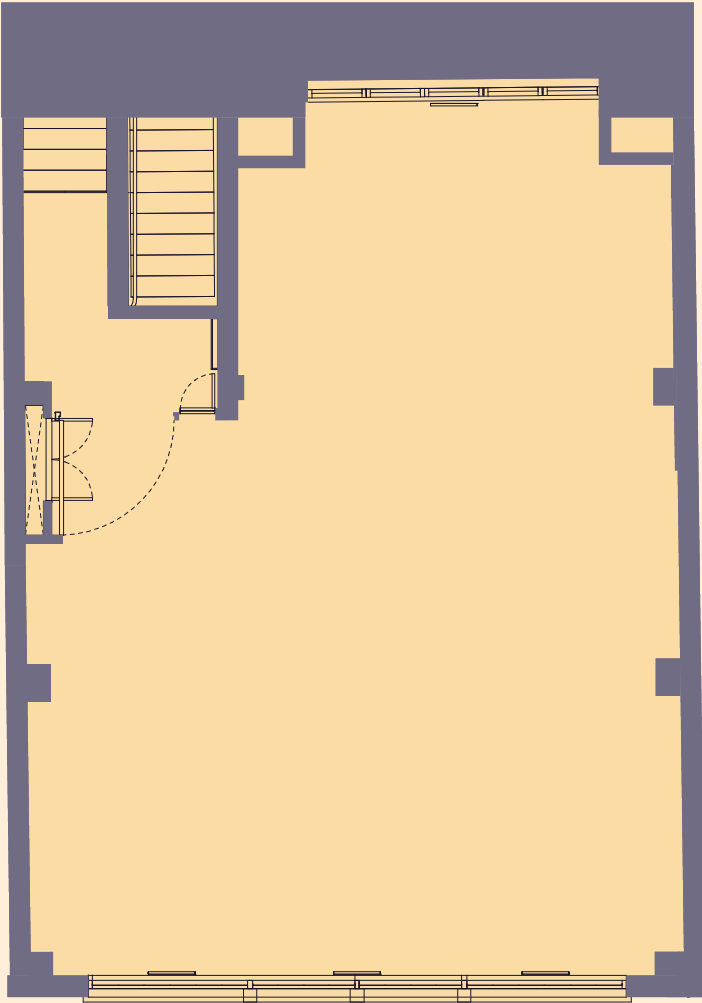
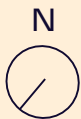
721 sq ft  
67 sq m



NOT TO SCALE



667 sq ft  
62 sq m



NOT TO SCALE

Agents

Eia Real Estate

Maxim Vane Percy  
M +44 (0)203 908 8000  
E [mvp@eia-re.co.uk](mailto:mvp@eia-re.co.uk)

Alex Kirk  
T +44 (0)203 908 8000  
E [ak@eia-re.co.uk](mailto:ak@eia-re.co.uk)

BNP Paribas Real Estate

Alex Walters  
T +44 (0)20 7318 5043  
E [alex.walters@realestate.bnpparibas](mailto:alex.walters@realestate.bnpparibas)

Alex Hunt  
T +44 (0) 207 318 5038  
E [alex.hunt@realestate.bnpparibas](mailto:alex.hunt@realestate.bnpparibas)

BNP Paribas and Eia Real Estate for themselves and for the vendors or lessors of this property whose agents they are, give notice that: (i) the particulars are set as a general outline only for the guidance of intending purchasers or lessees and do not constitute the whole or any part of an offer or contract; (ii) all descriptions, dimensions, references to condition and necessary permissions for use and occupation, and other details are given in good faith but without any responsibility whatsoever and any intending purchasers or tenants should not rely on them as statements or representations of fact, but must satisfy themselves by inspection or otherwise as to the correctness of each of them; (iii) neither BNP Paribas and Eia Real Estate nor their employers have any authority to make or give any representation or warranties whatsoever in relation to this property; (iv) unless otherwise stated all prices and rents are quoted exclusive of VAT, and intending purchasers or lessees must satisfy themselves independently as to the applicable VAT position.

Designed by Wordsearch.



BRUTONPLACE.LONDON